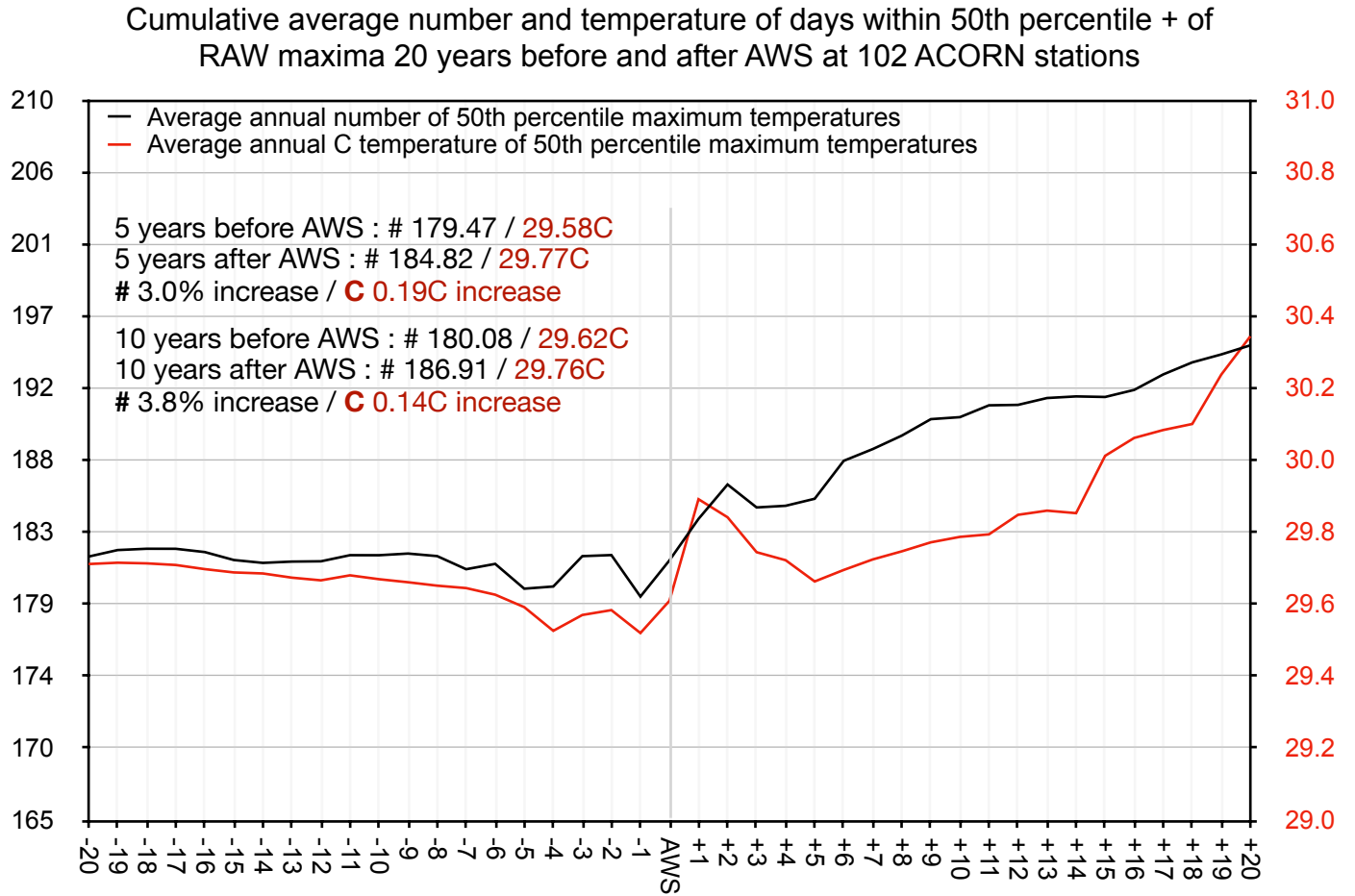
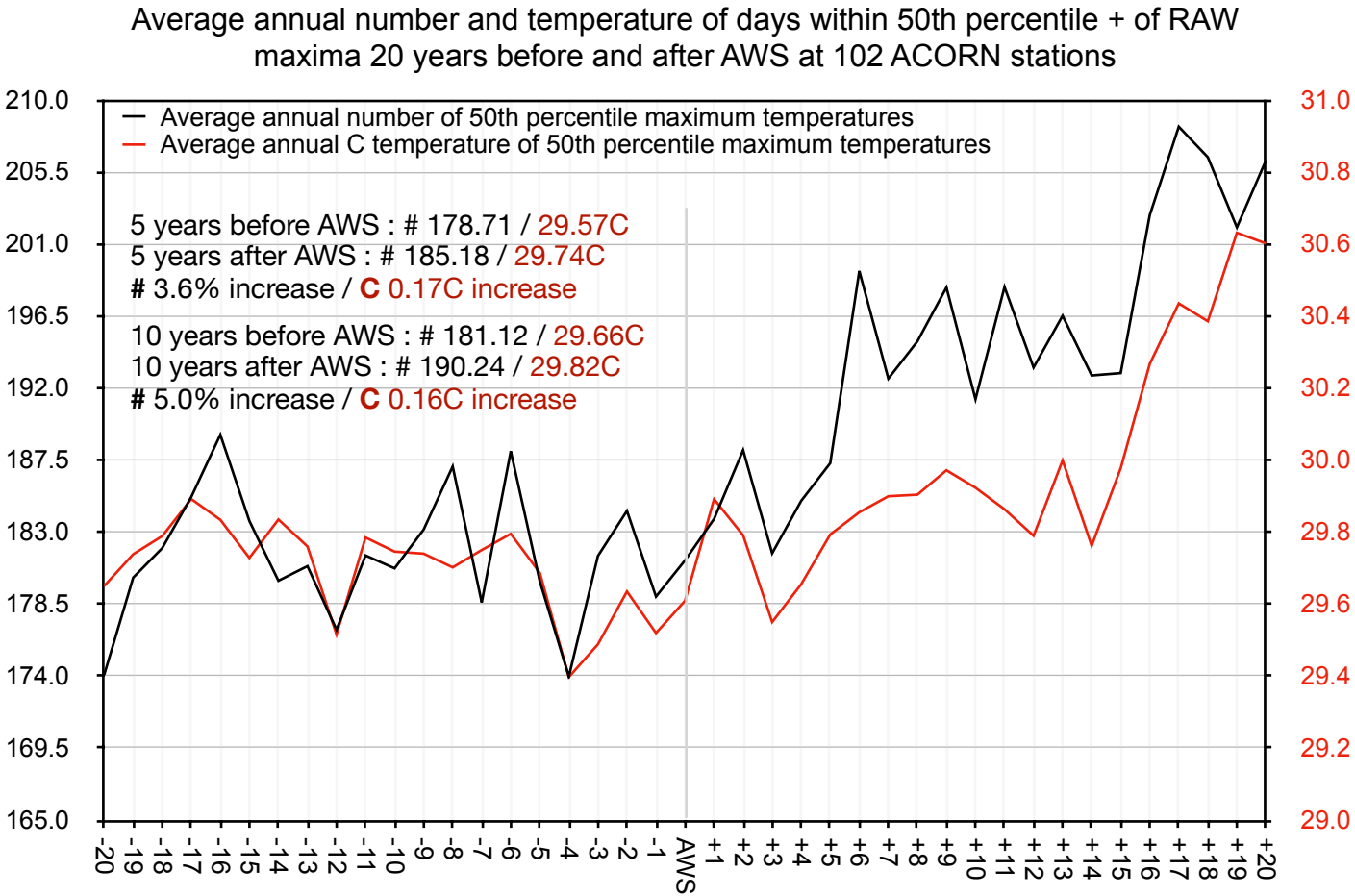
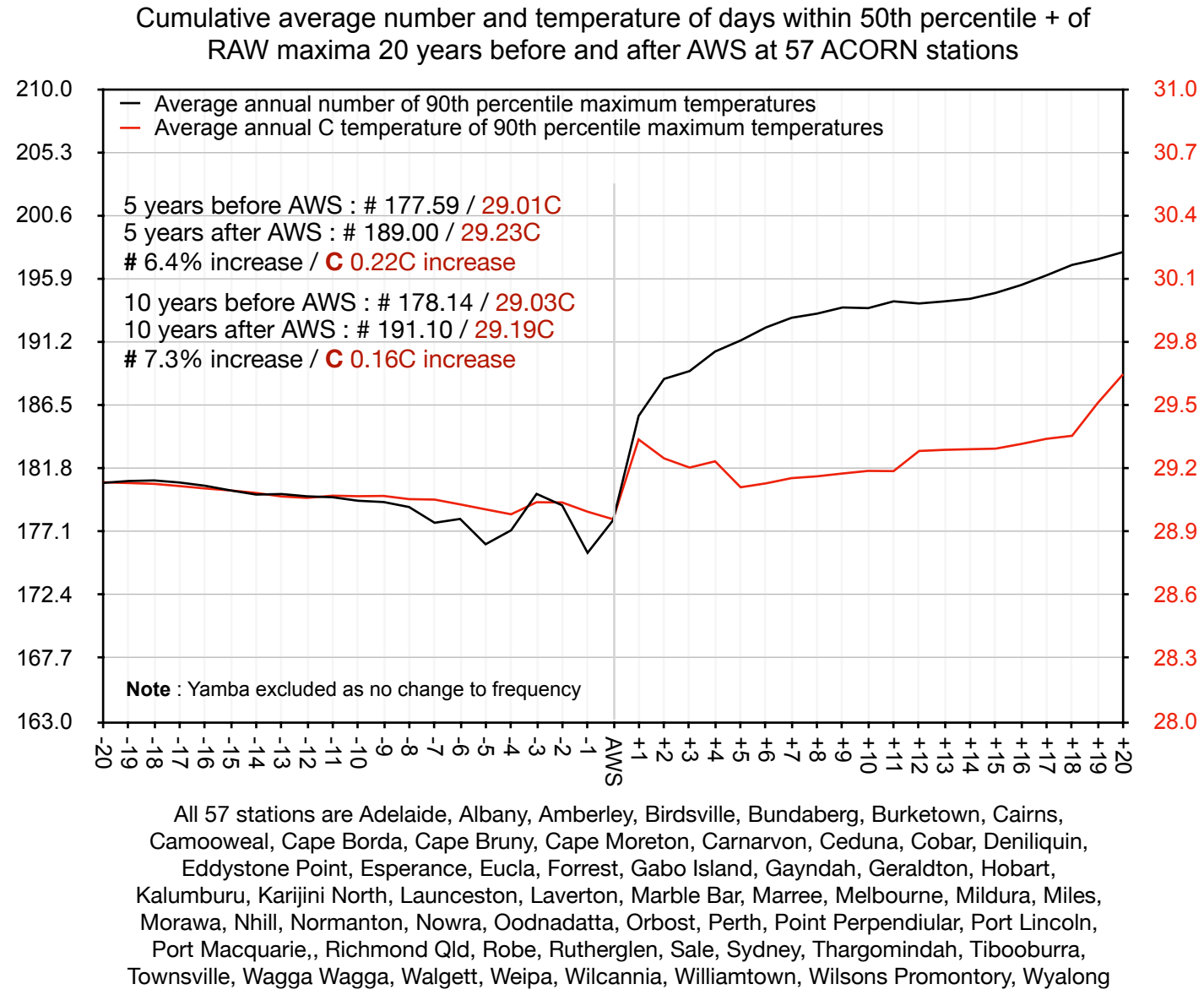
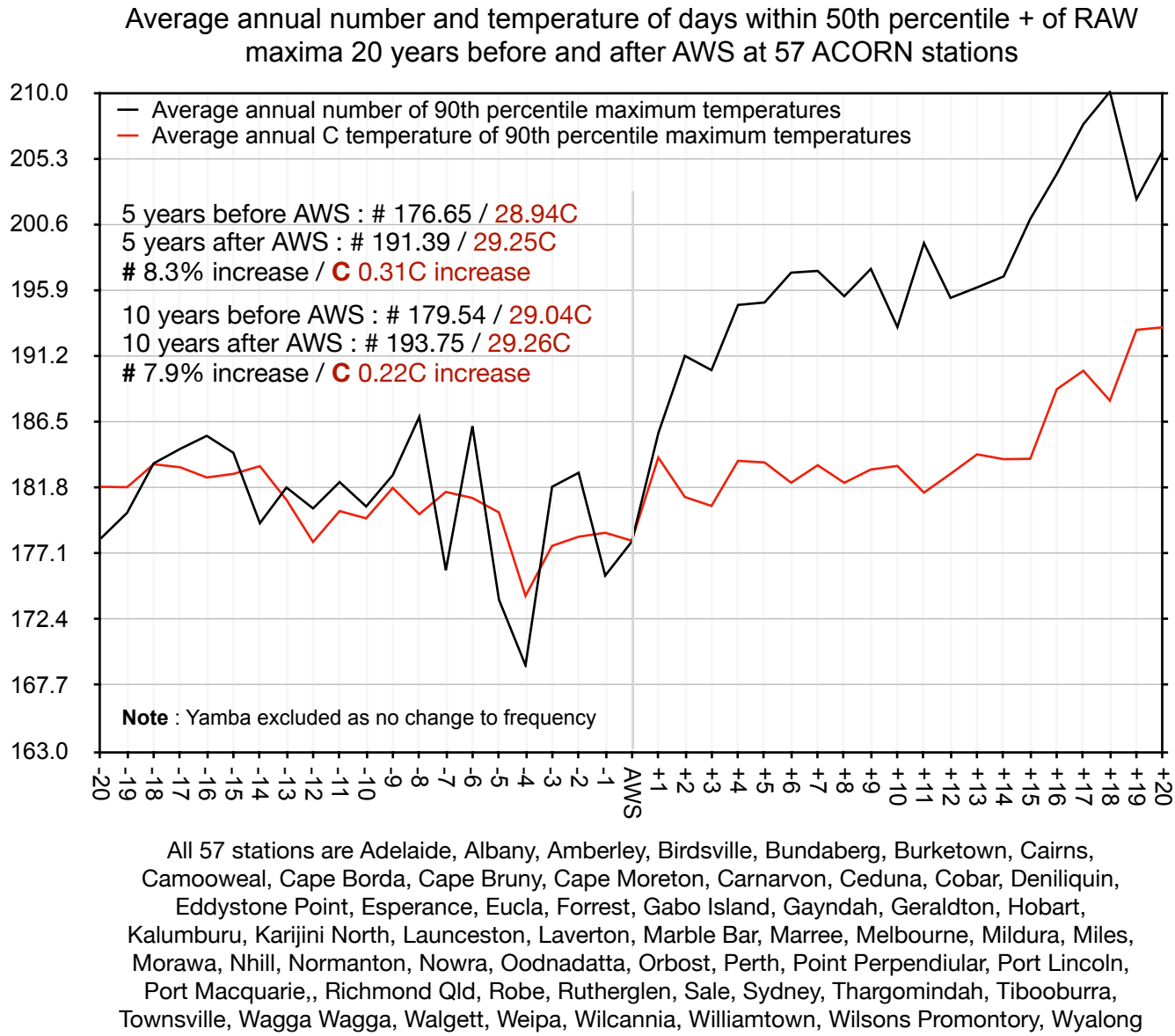


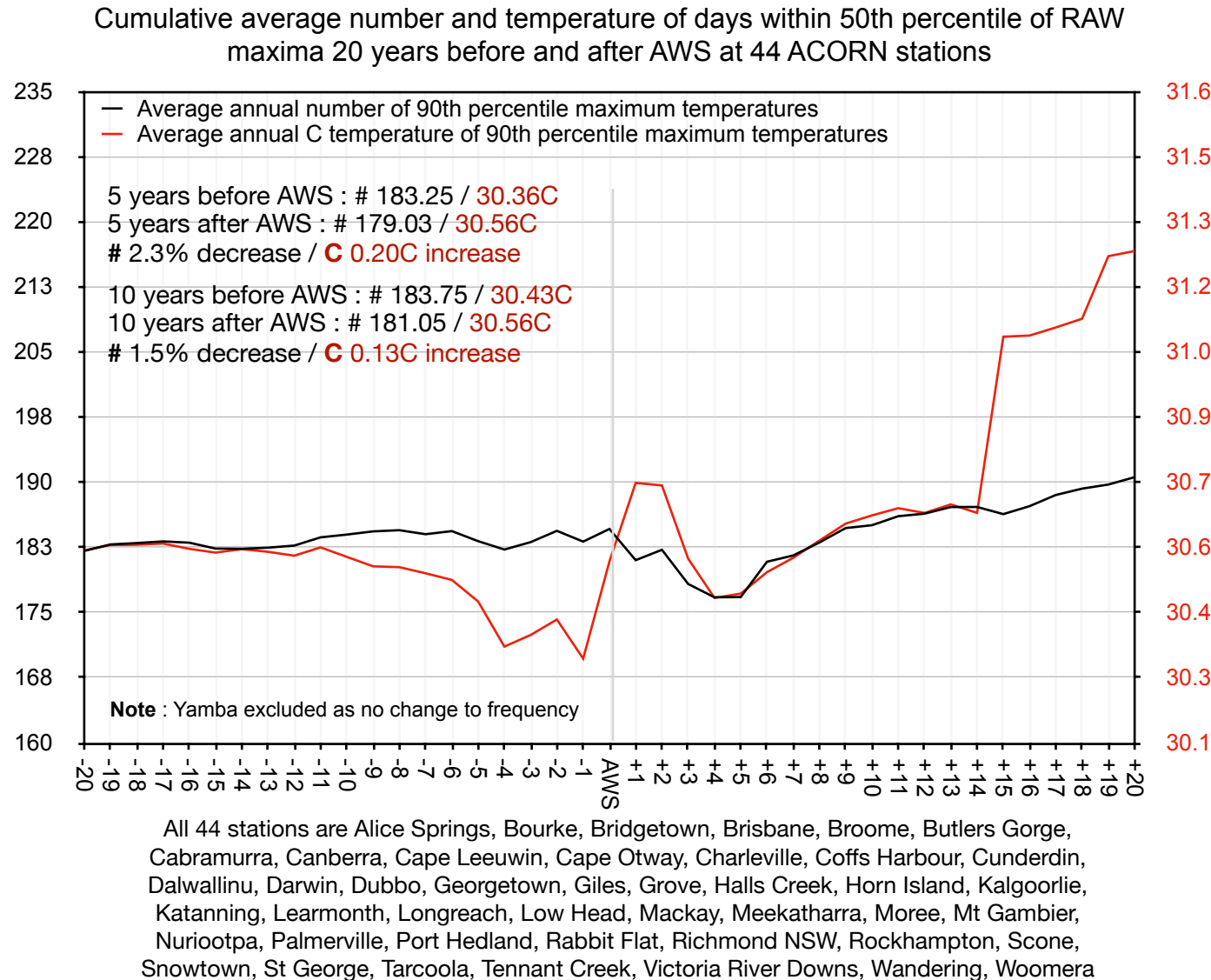
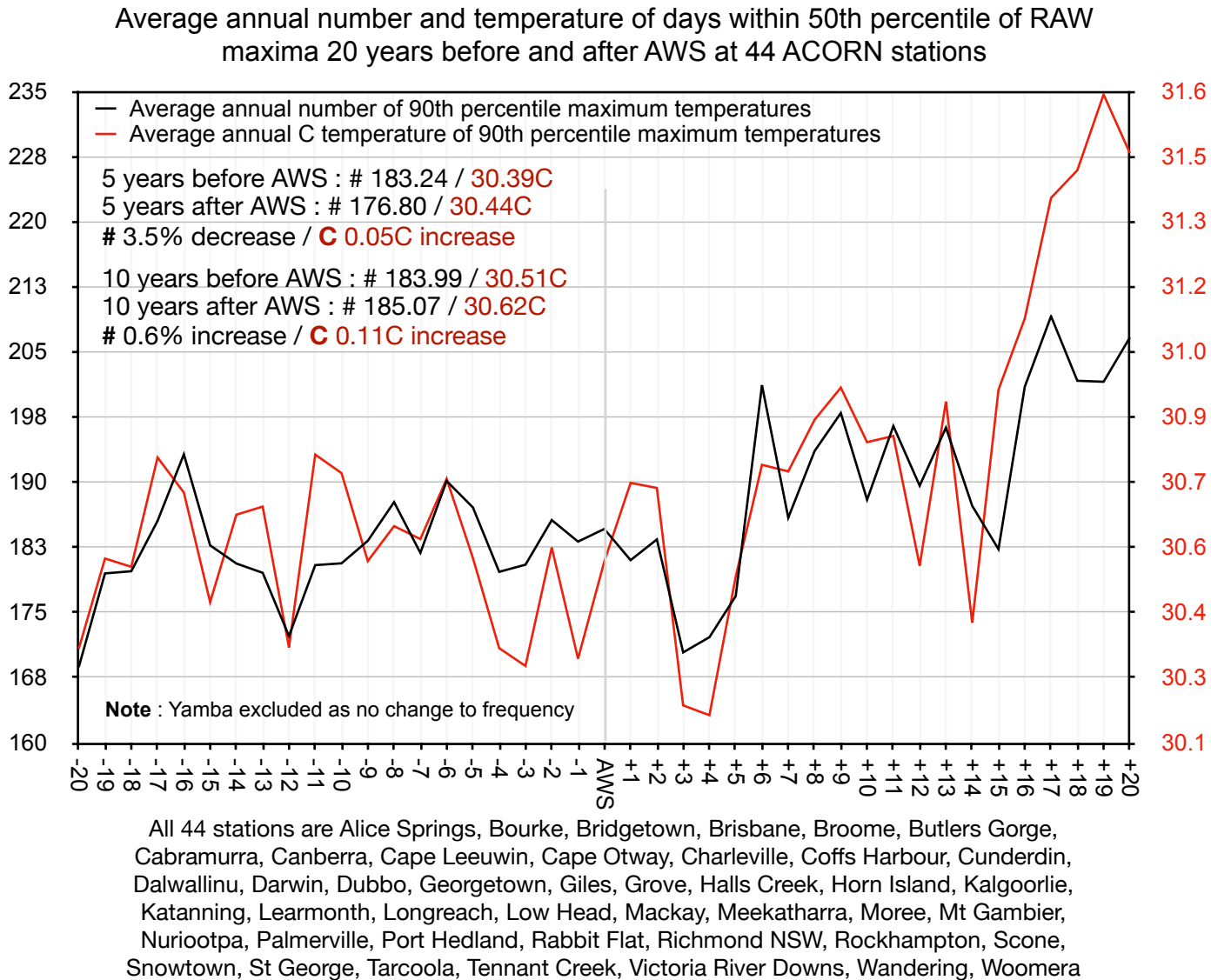
Year	# 50th	C 50th	Year	# 50th	C 50th
-20	174.09	29.65	-20	181.48	29.71
-19	180.17	29.74	-19	181.89	29.72
-18	182.01	29.79	-18	181.97	29.71
-17	185.21	29.89	-17	181.97	29.71
-16	189.09	29.83	-16	181.76	29.70
-15	183.71	29.73	-15	181.27	29.69
-14	179.97	29.84	-14	181.09	29.69
-13	180.88	29.76	-13	181.17	29.67
-12	176.91	29.52	-12	181.18	29.67
-11	181.55	29.79	-11	181.57	29.68
-10	180.75	29.75	-10	181.56	29.67
-9	183.17	29.74	-9	181.67	29.66
-8	187.11	29.70	-8	181.51	29.65
-7	178.62	29.75	-7	180.69	29.64
-6	188.06	29.80	-6	181.02	29.63
-5	179.93	29.69	-5	179.47	29.59
-4	173.99	29.40	-4	179.61	29.53
-3	181.51	29.49	-3	181.51	29.57
-2	184.34	29.64	-2	181.57	29.58
-1	178.98	29.52	-1	178.98	29.52
AWS	181.25	29.61	AWS	181.25	29.61
+1	183.83	29.89	+1	183.83	29.89
+2	188.13	29.79	+2	185.98	29.84
+3	181.69	29.55	+3	184.55	29.74
+4	184.96	29.66	+4	184.65	29.72
+5	187.32	29.79	+5	185.09	29.66
+6	199.32	29.86	+6	187.46	29.70
+7	192.59	29.90	+7	188.20	29.72
+8	194.92	29.90	+8	189.04	29.75
+9	198.29	29.97	+9	190.06	29.77
+10	191.31	29.92	+10	190.19	29.79
+11	198.32	29.86	+11	190.93	29.79
+12	193.29	29.79	+12	190.96	29.85
+13	196.52	30.00	+13	191.38	29.86
+14	192.79	29.76	+14	191.48	29.85
+15	192.94	29.98	+15	191.45	30.01
+16	202.80	30.27	+16	191.89	30.06
+17	208.33	30.44	+17	192.86	30.08
+18	206.42	30.39	+18	193.61	30.10
+19	202.04	30.63	+19	194.11	30.24
+20	206.22	30.60	+20	194.67	30.34
Above are annual averages			Above are cumulative averages before and after AWS		



Year	# 50th	C 50th	Year	# 50th	C 50th
-20	178.18	29.20	-20	180.74	29.13
-19	180.02	29.20	-19	180.87	29.13
-18	183.54	29.31	-18	180.92	29.13
-17	184.58	29.29	-17	180.76	29.12
-16	185.51	29.25	-16	180.52	29.11
-15	184.30	29.26	-15	180.17	29.10
-14	179.28	29.30	-14	179.87	29.08
-13	181.82	29.15	-13	179.91	29.07
-12	180.33	28.95	-12	179.74	29.06
-11	182.21	29.09	-11	179.67	29.07
-10	180.47	29.06	-10	179.41	29.07
-9	182.70	29.20	-9	179.31	29.07
-8	186.86	29.08	-8	178.94	29.06
-7	175.93	29.18	-7	177.77	29.05
-6	186.19	29.15	-6	178.06	29.03
-5	173.82	29.09	-5	176.18	29.01
-4	169.14	28.71	-4	177.21	28.98
-3	181.88	28.94	-3	179.92	29.04
-2	182.88	28.98	-2	179.07	29.04
-1	175.54	29.00	-1	175.54	29.00
AWS	177.96	28.96	AWS	177.96	28.96
+1	185.70	29.34	+1	185.70	29.34
+2	191.21	29.16	+2	188.46	29.25
+3	190.19	29.12	+3	189.04	29.20
+4	194.84	29.32	+4	190.49	29.23
+5	195.02	29.32	+5	191.31	29.11
+6	197.14	29.22	+6	192.28	29.13
+7	197.27	29.30	+7	192.99	29.15
+8	195.46	29.22	+8	193.30	29.16
+9	197.41	29.28	+9	193.76	29.18
+10	193.27	29.30	+10	193.71	29.19
+11	199.25	29.18	+11	194.21	29.19
+12	195.35	29.26	+12	194.05	29.28
+13	196.09	29.35	+13	194.21	29.29
+14	196.87	29.33	+14	194.40	29.29
+15	200.96	29.33	+15	194.84	29.29
+16	204.18	29.65	+16	195.42	29.32
+17	207.73	29.73	+17	196.15	29.34
+18	210.04	29.60	+18	196.92	29.36
+19	202.39	29.92	+19	197.33	29.51
+20	205.86	29.93	+20	197.87	29.65



Year	# 50th	C 50th	Year	# 50th	C 50th
-20	168.73	30.32	-20	182.11	30.54
-19	179.52	30.52	-19	182.86	30.56
-18	179.77	30.51	-18	183.02	30.56
-17	185.57	30.76	-17	183.21	30.56
-16	193.23	30.68	-16	183.06	30.55
-15	182.75	30.42	-15	182.38	30.54
-14	180.66	30.63	-14	182.35	30.55
-13	179.59	30.64	-13	182.48	30.54
-12	172.32	30.32	-12	182.73	30.53
-11	180.48	30.76	-11	183.67	30.55
-10	180.68	30.72	-10	183.99	30.53
-9	183.27	30.52	-9	184.36	30.51
-8	187.73	30.60	-8	184.49	30.50
-7	181.89	30.57	-7	184.03	30.49
-6	190.16	30.71	-6	184.39	30.48
-5	187.11	30.53	-5	183.24	30.43
-4	179.70	30.32	-4	182.27	30.32
-3	180.52	30.28	-3	183.12	30.35
-2	185.66	30.55	-2	184.42	30.38
-1	183.18	30.29	-1	183.18	30.29
AWS	184.64	30.52	AWS	184.64	30.52
+1	181.05	30.70	+1	181.05	30.70
+2	183.43	30.69	+2	182.24	30.69
+3	170.43	30.19	+3	178.30	30.52
+4	172.18	30.16	+4	176.77	30.43
+5	176.91	30.48	+5	176.80	30.44
+6	201.18	30.74	+6	180.86	30.49
+7	185.93	30.73	+7	181.59	30.53
+8	193.59	30.84	+8	183.09	30.57
+9	197.98	30.92	+9	184.74	30.61
+10	188.00	30.79	+10	185.07	30.62
+11	196.48	30.81	+11	186.11	30.64
+12	189.61	30.51	+12	186.40	30.63
+13	196.30	30.89	+13	187.16	30.65
+14	187.30	30.38	+14	187.17	30.63
+15	182.31	30.91	+15	186.35	31.04
+16	201.00	31.08	+16	187.26	31.04
+17	209.12	31.35	+17	188.55	31.06
+18	201.69	31.42	+18	189.28	31.08
+19	201.58	31.59	+19	189.75	31.22
+20	206.68	31.46	+20	190.60	31.23



50th 18.9	Annual # days above 50th percentile	Annual average C in days above 50th percentile		Pre and post cumulative averages	AWS 50th perentile average in years pre and post AWS	
1910	198	24.4			Av #	Av C
1911	195	23.5				
1912	206	23.8				
1913	192	24.2				
1914	218	24.7				
1915	189	24.5				
1916	176	24.3				
1917	182	23.6				
1918	186	24.1				
1919	207	24.5				
1920	182	23.9				
1921	213	24.2				
1922	193	24.5				
1923	196	24.6				
1924	175	23.2				
1925	183	24.1				
1926	196	24.7				
1927	186	24.8				
1928	210	24.2				
1929	189	23.9				
1930	191	24.4				
1931	184	23.8				
1932	179	24.1				
1933	193	24.0				
1934	192	24.6				
1935	156	23.5				
1936	181	23.7				
1937	207	23.2				
1938	215	24.2				
1939	184	24.3				
1940	207	25.1				
1941	177	24.5				
1942	182	24.5				
1943	171	24.5				
1944	188	25.2				
1945	185	23.7				
1946	157	23.9				
1947	185	24.0				
1948	169	23.9				
1949	149	23.3				
1950	168	23.5				
1951	169	24.1				
1952	156	23.6				
1953	174	23.8				
1954	174	23.5				
1955	187	23.5				
1956	153	23.0				
1957	183	23.6				
1958	167	23.5				
1959	192	24.0				
1960	163	24.8				
1961	194	24.1				
1962	175	23.8				
1963	168	23.8				
1964	160	23.8				
1965	188	23.9				
1966	156	24.2				
1967	185	23.8				
1968	181	24.9				
1969	169	23.7				
1970	164	23.3				
1971	182	23.6				
1972	221	24.1				
1973	197	24.0				
1974	171	24.1				
1975	194	23.3				
1976	181	23.5		20 years	183.0	24.0
1977	193	24.5		19 years	183.1	24.0
1978	172	24.3		18 years	182.6	24.0
1979	190	24.9		17 years	183.2	24.0
1980	215	24.0		16 years	182.8	23.9
1981	186	24.2		15 years	180.6	23.9
1982	195	24.9		14 years	180.2	23.9
1983	161	24.7		13 years	179.1	23.8
1984	174	23.2		12 years	180.8	23.7
1985	183	23.3		11 years	181.2	23.8
1986	173	23.0		10 years	181.0	23.8
1987	180	23.9		9 years	181.9	23.9
1988	196	24.4		8 years	182.1	23.9
1989	177	24.2		7 years	180.1	23.8
1990	189	24.3		6 years	180.7	23.8
1991	181	23.8		5 years	179.0	23.6
1992	170	23.3		4 years	178.5	23.6
1993	192	23.7		3 years	181.3	23.7
1994	179	23.9		2 years	176.0	23.7
1995	173	23.5		1 years	173.0	23.5
1996	172	22.8		0 years	172.0	22.8
1997	193	24.7		1 years	193.0	24.7
1998	179	24.6		2 years	186.0	24.7
1999	204	23.9		3 years	192.0	24.4
2000	190	24.4		4 years	191.5	24.4
2001	169	24.6		5 years	187.0	24.5
2002	202	23.6		6 years	189.5	24.3
2003	193	24.6		7 years	190.0	24.3
2004	189	23.9		8 years	189.9	24.3
2005	209	24.3		9 years	192.0	24.3
2006	191	24.6		10 years	191.9	24.3
2007	218	24.3		11 years	194.3	24.3
2008	201	24.1		12 years	194.8	24.3
2009	207	24.8		13 years	195.8	24.3
2010	191	24.8		14 years	195.4	24.4
2011	185	23.6		15 years	194.7	24.3
2012	185	24.4		16 years	194.1	24.3
2013	194	24.8		17 years	194.1	24.4
2014	204	24.6		18 years	194.7	24.4
2015	196	24.6		19 years	194.7	24.4
2016	197	24.5		20 years	194.9	24.4
2017	204	25.0				
2018	216	24.6				
2019	208	25.4				
2020	201	23.9				
2021	189	23.4				
2022	181	23.6				

